

Parkinson Disease

Zahra Vahabi.MD

April 2020

Call Our HELPLINE: 1-800-4PD-INFO (473-4636)

[Español](#)

[About Us](#)



[In Your Area](#)

[Search](#)

[Donate](#)



[Understanding Parkinson's](#)

[Living with Parkinson's](#)

[Expert Care](#)

[Research](#)

[Get Involved](#)

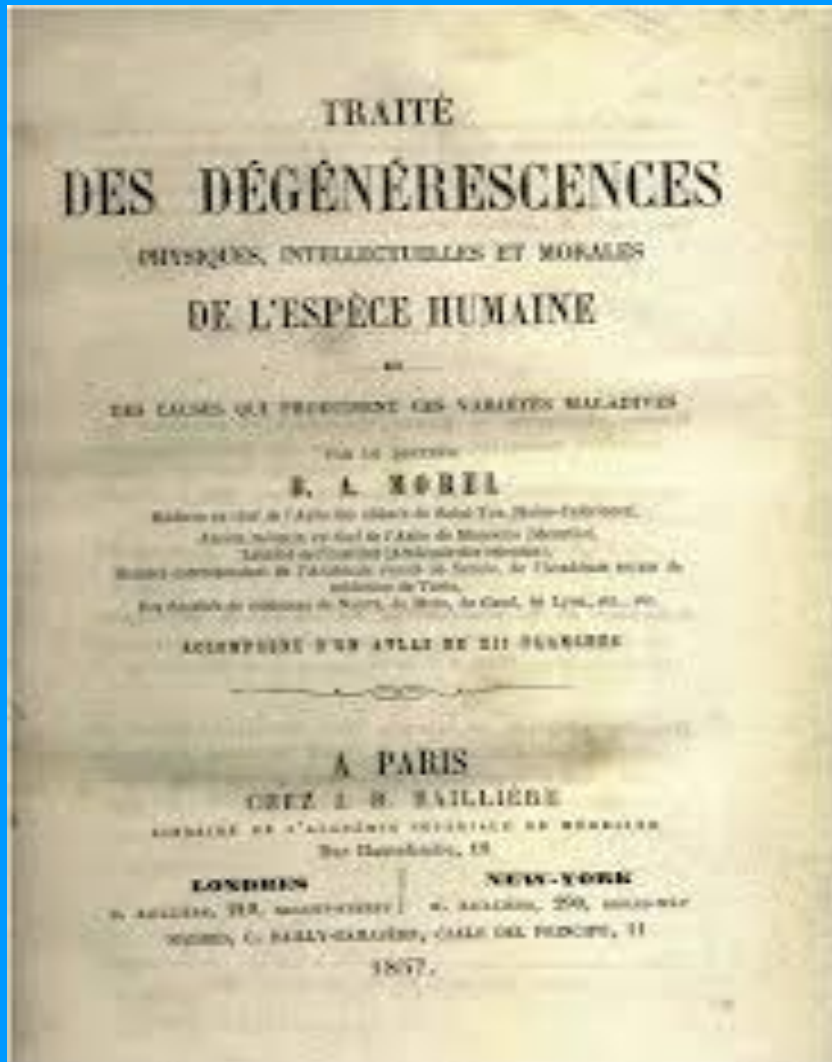
[Ways to Give](#)



Better Lives. Together.

We have everything you need to live better with Parkinson's. Support our mission to improve care and advance research toward a cure.

[Help Fund the Fight Against Parkinson's](#)



- 1825-1893 : martin sharchot
- Three cardinal motor manifestations:
 1. bradykinesia,
 2. rigidity
 3. tremor

Parkinsonism remains a purely clinical diagnosis



10 alarm symptoms

- Tremor
- Small Handwriting
- Loss of Smell
- Trouble Sleeping
- Trouble Moving or Walking
- Constipation
- A Soft or Low Voice
- Masked Face
- Dizziness or fainting
- Stooping or Hunching Over

- Age :60-65
- Men
- Prevalence : 1% - 2.8 %

- Motor symptoms

Cardinal sign

- Non-motor symptoms

Depression

Anosmia

Constipation

Dizziness

Sensory abnormalities

Sexual dysfunction

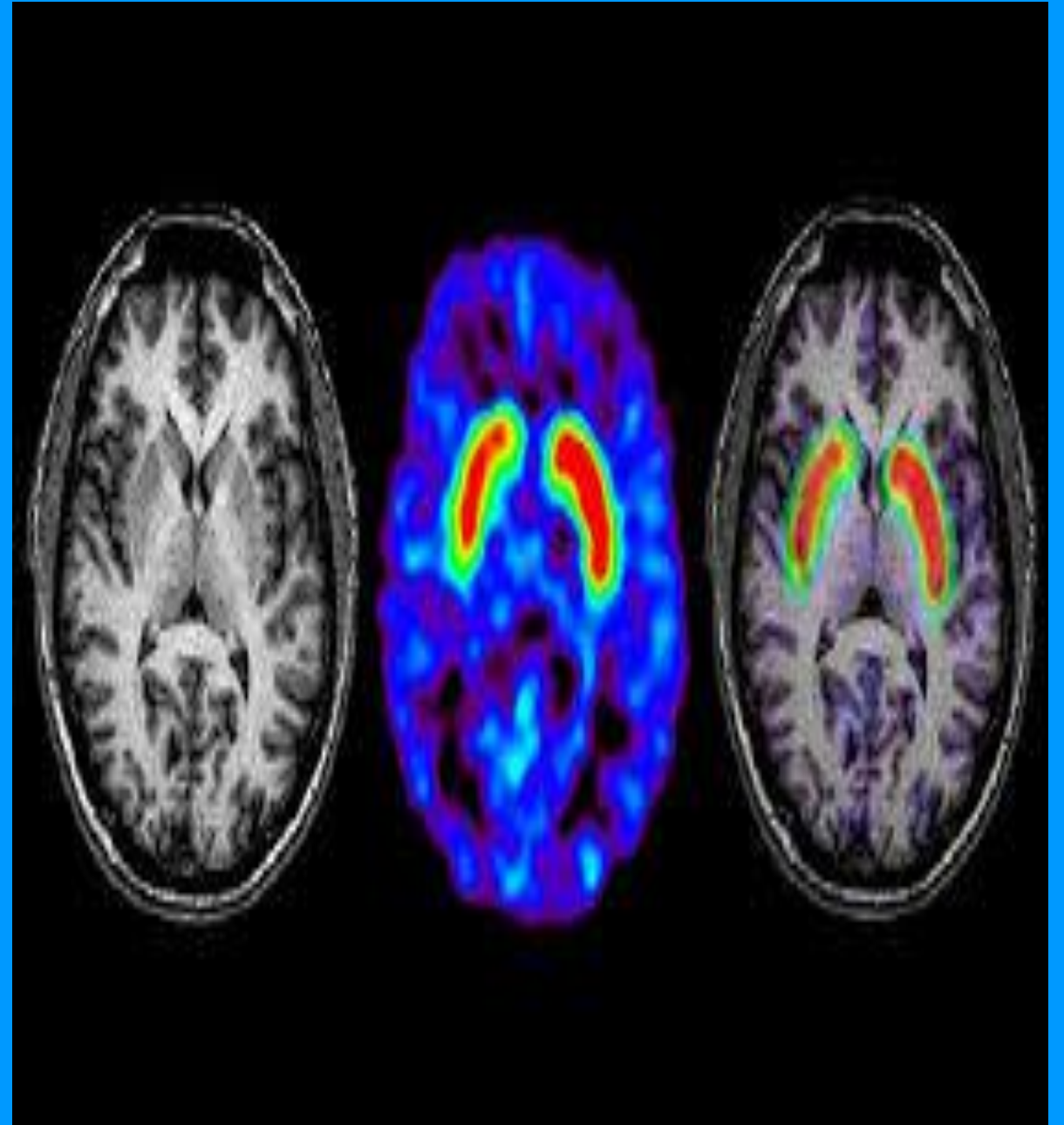
UTI , argency

..

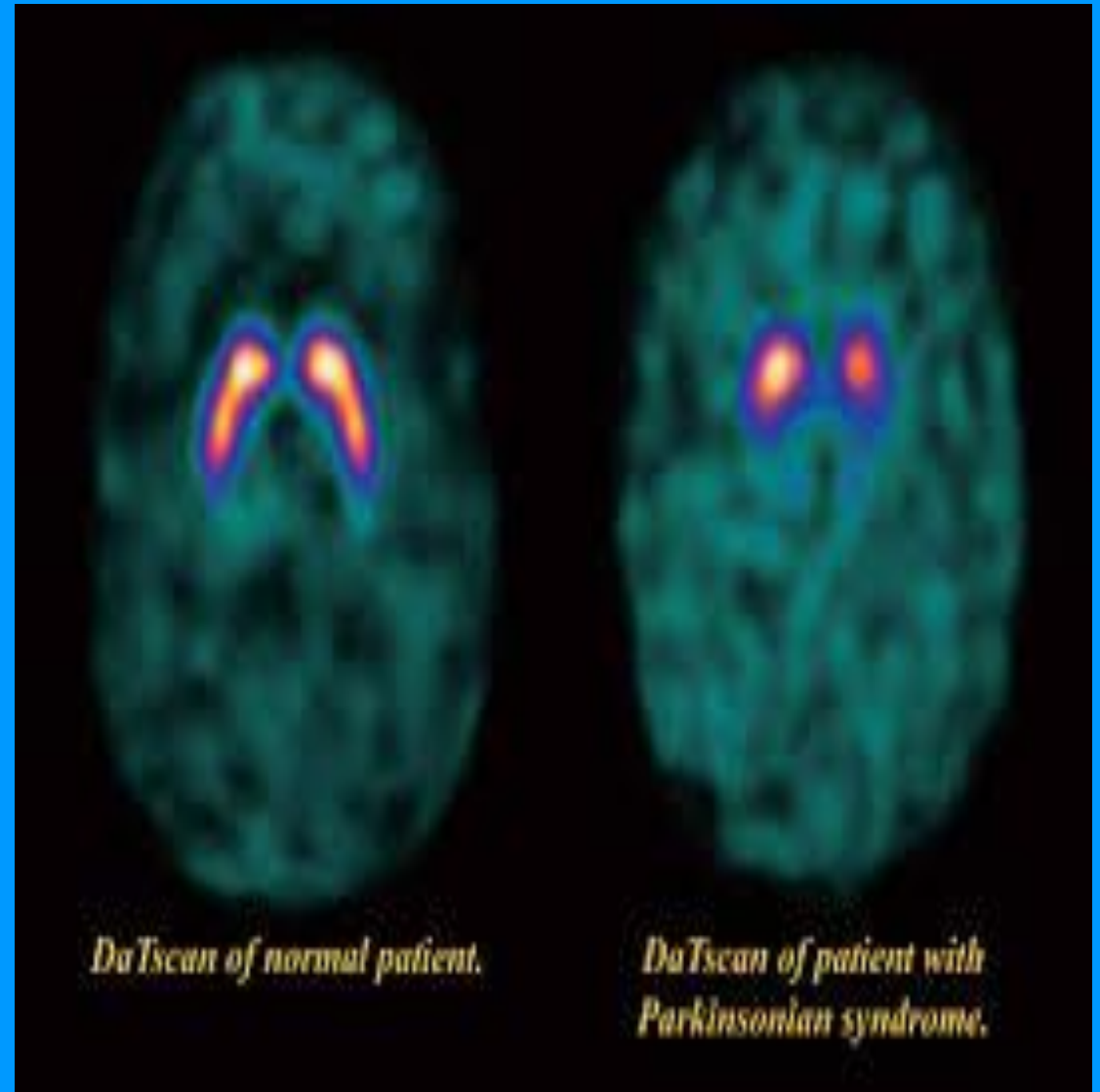
Motor symptoms

- Walk with a forwardly stooped (camptocormic) posture,
- Reduced arm-swing
- Short shuffling steps (festination),
- Turning may be difficult,

Structural brain imaging is typically normal



Dopamine transporter (DAT) SPECT imaging reveals asymmetric, bilateral reduction in striatal uptake, more marked in the posterior putamen



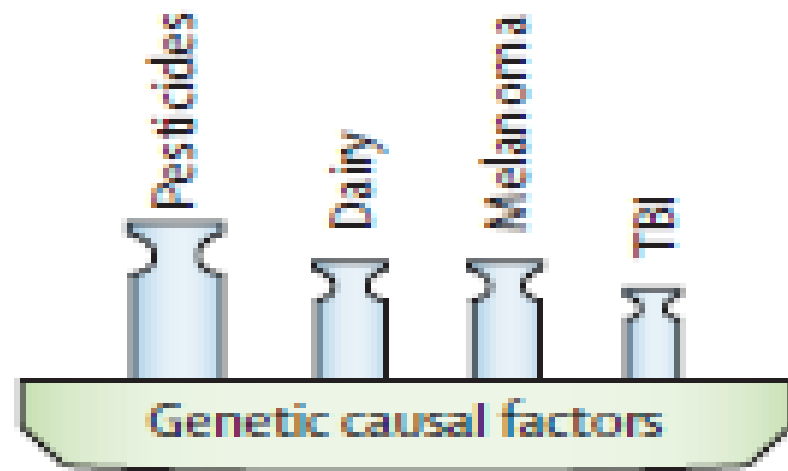
Risk factors

- Dairy products (M>F)
- Pesticides (MPTP)
- Methamphetamine
- Cancer (melanoma)
- Traumatic Brain Injury
- Alcohol
- BMI and DM type 2 (one study)
- Blood cholesterol
- Postmenopausal hormones and reproductive factors
- Manganese can cause parkinsonism

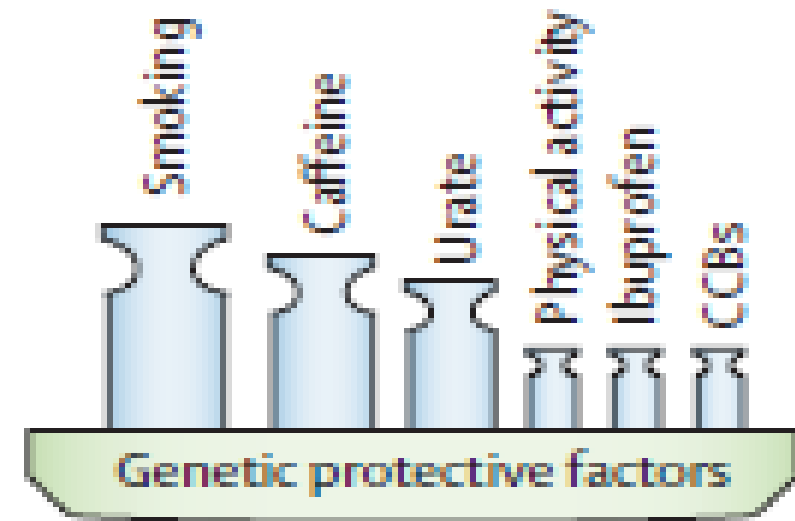
Protective factors

- Tobacco
- Coffee and caffeine
- Green and black tea
- Urate
- Physical activity (BDNF)
- NSAIDs
- Calcium channel blockers
- Statins
- Dietary patterns

Risk factors



Inverse risk factors



PD

- Pharmacological

Dopamine (levodopa)

Dopamine receptor agonist

....

- Non-pharmacological SURGERY

DBS : SURGERY

- Physical activity can be seen as a complement to pharmaceutical treatment to manage the inherent decline associated with the disease

THANKS